

Commandments of the good doggy travel



1. Always have in mind your **dog's features and needs**. You know better than anyone what kind of exercise is your dog used to. Normally is not advised for puppies or seniors to take long walks.
2. **Give him/her time to explore** when you get to the hotel. Holidays with a dog tend to be more calmed, so the dog can connect with his/her owner and everything around.
3. Keep in mind your dog's walking, eating and **routines, and make sure he/she has enough sleep**.
4. A portable dog drinker will be your best ally, and bring a **water bottle** if you think there won't be any fountains or toilets on your trip.
5. Avoid hottest hours and **check if the ground is too hot** for your dog's paws. If you put the palm of your hand on the floor and you can't take more than 5 seconds, it's not a good time to walk with your dog. Your dog will enjoy early morning and late evening walks more.
6. Don't forget to pick up your doggy's poops with a bag and throw them in a trash can. Remember that is your responsibility and that by **keeping the areas we visit with our best friends clean we will have more dog friendly places to visit in the future**.
7. If you want to have lunch or dinner with your doggy, **ask at the restaurant if they allow dogs in**, and have him/her by your side all the time, on the floor and not near someone else's food. If you are going to make a reservation, asking if they are dog friendly is a good idea to avoid any contingency.
8. If you travel with **dogs catalogued as potentially dangerous**, remember that they must wear a **muzzle**.

Transport

GETTING TO BENIDORM:

PLANE

There many airlines that operate in Alicante's Airport that allow up to 8kg dogs in. And bigger dogs in the aircraft hold. Check each airline's conditions before making any reservation.

BUS

- **Alsa**: 1 pet per service. At bus hold Max. 10 kgs.
- **Interbus**. At bus hold, closed kennel max 75cm long 100cm height

TRAIN

- **Renfe**: Alicante Station// Long and Medium Distance. Max 10 kgs. Kennel Max 60*35*35
- **Renfe Suburban Train** (Murcia-Alicante Line): in a kennel or with a muzzle, without limit of race or size, with a leash no longer than 1,5 m.
- **TRAM (Metropolitano de Alicante)**
You are not allowed to carry animals on your trip, except if:
 - Service dogs for people with disabilities o training instructors.
 - Dogs that accompany security forces.
 - Little domestic animals in cages or kennels.

MOVE AROUND BENIDORM:

The ordinance prohibits the movement of animals in public transport. You can travel with your dog in a taxi, but you must advise that you are in good company about the weight of your dog, so they can send the right taxi for you.

Radio Taxi Benidorm:
965 862 626 // 670 965 822

Recreational areas

- ADOLFO SUAREZ CANINE PARK

Fenced dog park where different structures have been installed. Dogs can walk and run around freely. (Find it located on the map 📍 in this brochure)
Other interesting places to enjoy a walk with a dog are:

- Ciudad Real Avenue (Social Center)
- Cl. Italy
- Foietes Park
- Benissa Avenue (Tourist Development Centre)
- Sequia mare Park.

Dog-friendly Establishments

Every day more accommodations, restaurants, shops welcome customers with dogs in Benidorm. Discover the updated list here:
<https://en.visitbenidorm.es/ver/5093/benidorm-with>



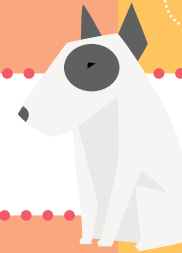
Nearby dog beaches

The Environmental Ordinance prohibits the entry and stay on beaches all year round. But in the surroundings you will find several official dog beaches, which you can access by car or taxi.

- **L'OLLA BEACH** (ALTEA)
17 km - 20 minutes by car
- **XARCO BEACH** (VILLAJOYOSA)
20 km - 25 minutes by car
- **BARRANC D'ÀIGÜES DOG BEACH** (EL CAMPELLO) 28 km - 30 minutes
- **PUNTA DEL RIU DOG BEACH** (EL CAMPELLO) 35 km - 35 minutes



Write down here the phone number and address of the emergency vet you have chosen for your stay in Benidorm. Always keep this guide handy, you never know when you might need it.



General regulations

LAW 4/1994 GENERALITAT VALENCIANA

ART. 12 // The owner of the dogs must keep them on public roads under his control at all times by means of a leash or similar. Dogs considered to be potentially dangerous breeds shall be required to wear a muzzle in addition to the leash.

ENVIRONMENT ORDINANCE

Art. 148

1-a) The entry and residence of animals in establishments for the manufacture, handling, storage, transport and sale of foodstuffs shall be prohibited.

1-c) The owners of public establishments and hotel accommodation may, at their discretion, allow animals to enter. In the event of a ban, they shall post the appropriate sign in a visible place.

1-e) It is forbidden to enter and stay on the beaches.

2-The previous rules will not apply to guide dogs.

Regulations in force as of November 2019.

Protective instructions for dogs:

- Up-to-date vaccinations and deworming. High prevalence of heartworm (filarial worms).
- Vaccination against rabies is compulsory in Alicante.
- Recommended: protection through phlebotomine pipettes/necks, which causes Leishmania. In cases of long stays

Art 153

Persons accompanying the dogs must be provided with the necessary equipment for the collection of excrement.

Art 157

The dogs considered PPP in Benidorm are:

- American Staffordshire Terrier
- Staffordshire Bull Terrier
- Mallorcan Prey Dog
- Brazilian Mastiff
- Canary Dam
- Bullmastiff
- American Pitbull Terrier
- Rottweiler
- Bull Terrier
- Dogue de Bordeaux
- Tosa Inu (Japanese)
- Argentinian Dogo
- Doberman
- Neapolitan Mastiff

it may be interesting to evaluate the vaccination against Leishmania.
• Always travel with your passport up to date and make an appointment with your vet well in advance to explain your destination. He will help you to protect your dog as best as possible and keep your documents up to date.



WITH DOGS

WITH DOGS
WITH DOGS



BENIDORM

BENIDORM
BENIDORM

city&beaches

Benidorm



Benidorm

Woof! clues

TO ENJOY BENIDORM WITH THE WHOLE FAMILY!

Benidorm enjoys one of the largest range of activities and services of Spain. Visitors with dogs included- Discover on these pages our WOOF CLUES! that you must follow so your dog enjoys as a family member of your holidays in Benidorm. Because he/she also deserves some relaxing days with you, right? Pack up and... May your dog be with you!

WHY BENIDORM IS A GOOD DESTINATION TO VISIT WITH A DOG?

- **Mild Climate:** the best seasons to visit Benidorm with dogs are autumn, winter and spring. You will enjoy mild temperatures that will allow you to enjoy walks and outdoor activities
- **Hostel and hotel offer:** in Benidorm you will find one of the biggest offers in hotels and restaurants of the country, and a local legislation that allows costumers with dogs. Discover the accommodations and restaurants that are dog-friendly on this link: <https://en.visitbenidorm.es/ver/5093/benidorm-with>
- **Natural Environment:** From Benidorm you can access to Sierra Helada Natural Park, and you can visit all 4 official dog beaches, less than 30 minutes away by car. You won't stop discovering new places... and smells!



Enjoying the views form Paseo de Punta Cavall

3 WALKS, 3 UNIQUE EXPERIENCES // Walking while sniffing and moving their hips proud... Our doggy's favourite activities! Here we highlight 3 walks that our furry friends will love:

An outdoor museum

Tossal de la cala

If you want to add some history to your outdoor adventures, you will love the visit to this hill located between Poniente Beach and Finestrat. It shows the economic activity that this region had as a center of trade exchange. Nowadays it is in midst

of an excavation intended to make these archaeological remains (dated on the 1st Century BC) into a museum. **Perfect to** discover the Roman origins of Benidorm. (See itinerary on map)



Benidorm's heart

Levante and Poniente Beach Promenades

Probably your dog is the most beautiful one in the neighborhood, and most probably of the city! Walk on this promenade so your doggy can show off his/her hips, probably some heads will get turned and even a free cuddle will be given! You will be on a semi pedestrian promenade with a lot of water fountains and a tiled floor. Enjoy a colourful walk at the shade of Parque de Elche's palm trees. (See on map)

8km/ 2 hours

Must visit: Plaza del Castillo Viewpoint, between Poniente and Levante Beach

Perfect for: a long evening walk before or after dinner in a terrace with views to the sea. Careful if your dog gets anxious around people since is a very vibrant area all year long. (See itinerary on the map)

Connect with your dog... and the sea

Punta del Cavall Promenade

If you need to escape from the urban environment without transport, you can access this route with wonderful views from the end of Levante Beach. This route is the Benidorm's entrance to Sierra Helada Natural Park. Vehicles are not allowed to go through it, so you will be able to walk without worries. But there are bikers usually, and the local legislation determines that your dog must go on a leash. **Perfect for:** starting off the day with energy, since it's when the park is less crowded. Avoid days and hours of intense heat since there are

not many areas with shade. There are no water fountains so bring water!

2,5km/45 minutes: From the end of Poniente Beach. Ups and Downs. Asphalted soil. Between Cala Ti Ximo and Cala Almadrava you will find a small parking where you can leave the car if you want to, from that point de route takes 35 minutes to go and 35 minutes to return. (See itinerary on the map)



tourist information

Location Map



Tourist Information
+34 96 585 13 11
www.visitbenidorm.es

